

## Envelop

### 1900 Issue

Beginning with the 1900 issue to about 1930, Bradbury Wilkinson & Co Ltd. of London were the manufacturers of Mexican postal stationery. We list all known items. *Although perhaps officially issued in 1900, many copies may be found cancelled in November and December 1899.*

Items from Bradbury Wilkinson & Co Ltd archive had perfins of five different types:

**Type 1** SPECIMEN 34x5 mm.

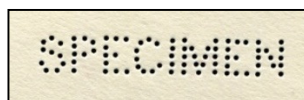
**Type 2:** CANCELLED 40.5x5 mm.

**Type 3:** SPECIMEN/BRADBURY WILKINSON & C<sup>o</sup> LD/LONDON 92x26mm. in three lines.

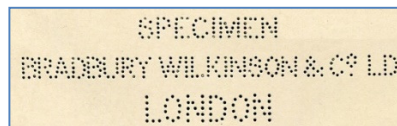
**Type 4:** Four diamond shaped perfins 10.5x6.5 mm. This perfin is known on envelopes and wrappers.

**Type 5:** MUESTRA 73x9 mm. Types 4 and 5 usually have a manuscript archive number added.

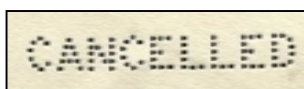
### Bradbury Wilkinson & Co Ltd. Proofs



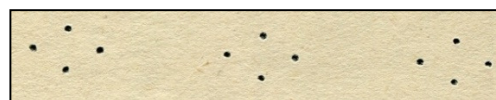
**Type I** 34x5 mm



**Type III** 92x26mm



**Type II** 40.5x5 mm



**Type IV** Perfins in diamond 10.5x6.5 mm



**Type V** 73x9 mm.

**Indicium:** Eagle. **Format:** Plain. **Paper:** Heavy, creamy white, wove. **Manufacturer embossing:** BRADBURY, WILKINSON & CO., LD., MANUFACTURERS, / FARRINGTON ROAD, LONDON. In two lines on upper rim of left side flap. No return address corner card at upper left. **Size:** 159 x 88 mm. **Knife:** 19.



**E60**  
No corner card



**E64**  
Corner card

MEPSI	EPS		*	o
E 60	60	2c carmine-rose	4.-	25.-
E 60S	60M	Same, black MUESTRA overprint diagonally over LR corner of indicium	12.-	
E 60P	-	Same, BW Type 1 Perfin (SPECIMEN)	80.-	
E 61	61	5c blue to light blue	3.-	6.-
E 61S	61M	Same, black MUESTRA overprint diagonally over LR corner of indicium	12.-	
E 61P	-	Same, BW Type 1 Perfin	80.-	

## Envelop

E 62	62	10c lilac	3.-	8.-
E 62S	62M	Same, black MUESTRA overprint diagonally over LR corner of indicium	12.-	
E 62Sa	-	Same, BW Type 1 Perfin	80.-	

**Note:** There are varieties in the manufacture's name – see page 19.

### 1903 Issue

**Indicium:** Eagle. **Format:** Plain. **Paper:** Heavy, creamy white, wove. **Manufacturer embossing:** BRADBURY, WILKINSON & CO., LD., MANUFACTURERS, / FARRINGTON ROAD, LONDON. In two lines on upper rim of left side flap. **Size:** 159 x 88 mm. **Knife:** 19. **Change of color**

MEPSI	EPS		*	°
E 63	63	5c orange-yellow to orange.	3.-	5.-
E 63S	-	Same, black MUESTRA overprint diagonally over LR corner of indicium	12.-	
E 63P	-	Same, BW Type 2 Perfin (CANCELLED)	80.-	

### 1913 Issue

Earliest reported date March, 1913

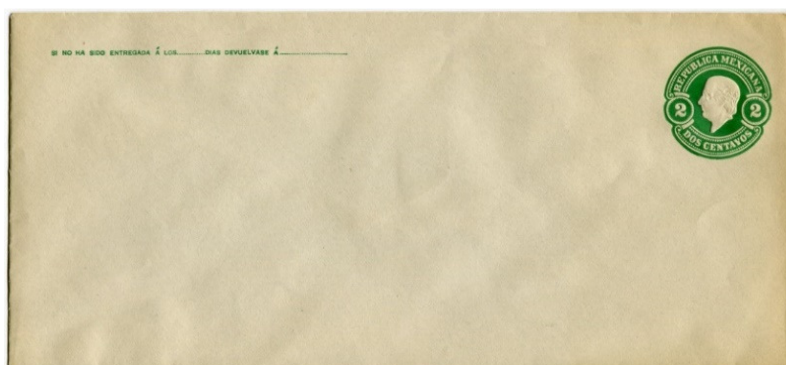
**Indicium:** Hidalgo bust, colorless embossing in a circular design. **Format:** One line printed corner card upper left in two types. **Paper:** Light weight, wove. **Manufacturer embossing:** BRADBURY, WILKINSON & CO., LD., MANUFACTURERS, / FARRINGTON ROAD, LONDON. in two varieties. **Inner lining:** Nr.1. **Sizes:** f: 165 x 92 mm., g: 155.125 mm., h: (legal size) 235x103 mm. **Knives:** 20, 21, and 22.

**Corner cards:** EPS listed two types of corner cards according to **size** and length. An analysis of E70 – E72 corner-cards shows that there are many different lengths between 88mm. and 96mm. We have seen 88, 89, 92, 93, 94 and 96mm. Therefore, the types differ in size of the letters and not in total length.

#### Corner Card types:

**Type A** is 88-89 mm. long.  
Text from SI NO to DEVUELVA SE Á is 67.5 mm. **Small letters** (1mm. high)

**Type B** is 92-96 mm. long.  
Text from SI NO to DEVUELVA SE Á is 76 mm. **Large letters** (1.25mm. high)



E70c corner card type A

## Envelop



E71b

MEPSI	EPS			Corner card			
				Type A	Type B	Type A	Type B
				*	°	*	°
E 70a	70a	2c	a. Size f	50.-	10.-	8.-	10.-
		green					
E 70aSa	-	Same, BW Type 4 perfins (Diamond shaped)			-	100.-	-
E 70b	70b		b. Size g	75.-	50.-	25.-	-
E 70c	70c		c. Size h	20.-	50.-	-	-
E 71a	71a	5c	a. Size f	75.-	30.-	12.-	10.-
		orange					
E 71aSa	-	Same, BW Type 4 Perfins (Diamond shaped)			-	100.-	-
E 71b	71b		b. Size g	50.-	30.-	8.-	10.-
E 71c	71c		c. Size h	50.-	60.-	12.-	20.-
E 72a	72a	10c	a. Size f	-	100.-	15.-	40.-
		blue					
E 72aSa	-	Same, BW Type 4 perfins (Diamond shaped)		100.-	-	.	-
E 72b	72b		b. Size g	60.-	150.-	-	-
E 72c	72c		c. Size h	20.-	250.-	-	-

**1910-1914 Envelopes of the Revolution  
are listed in a separate chapter.**

### 1923 Issue

**Indicium:** Circular embossed Aztec Calendar. **Format:** Plain. **Paper:** light weight, white, wove. **Manufacturer name:** WATERLOW & SONS LIMITED, LONDON WALL shadow printing on left side flap. **Lining:** Grey black, Nr.2. **Size:** 164 x 94 mm. **Knife:** 23. **Type I:** separate beads or **Type II:** connected beads



E74 Type I separate dots



E74 Type II connected dots



Aztec Calendar

MEPSI	EPS		Type I		Type II	
			*	o	*	o
E 73	73	5c orange	12.-	12.-	5.-	8.-
E 74	74	10c blue	15.-	15.-	10.-	10.-

#### 1927 Issue

**Indicium:** Circular embossed Aztec Calendar. **Format:** Plain. **Paper:** light weight, white, wove. **Inner lining:** Grey black, Nr.2. with **Manufacturer name:** WATERLOW & SONS LIMITED, LONDON WALL shadow printing on left side flap. **Size:** 164 x 94 mm. **Knife:** 23.

Same as previous issue, but with new values and colors.

**Type I** with separated beads **only**. White dash below right value points to one bead (as in type II on previous issue).

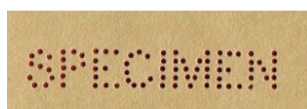
MEPSI	EPS			
			*	o
E 75	75	4c red	8.-	20.-
E 75P	-	Same, with BW Type 5 perfin (MUESTRA)	80.-	-
E 76	76	8c orange	8.-	100.-
E 76P	-	Same, with BW Type 5 perfin (MUESTRA)	80.-	-

**Note:** E76 with uprating is far more common than without. The above used price is for the proper 8 Centavos rate!



## Letter

1899 issue



Type I

*Beginning with the 1899 issue to about 1930, Bradbury Wilkinson & Co Ltd. of London were the manufacturers of Mexican postal stationery. Items from their archives had five different types of perfins "SPECIMEN": Lettercards have been seen with Type 1 SPECIMEN (34x5 mm.) only. However, all Mexican postal stationery from their production may exist perfins.*

**Indicium:** Round embossed Eagle design. (Eagle coat-of-arms becomes part of indicium design). **Card Format:** Formula in color of indicium. With two or three lines of heading. Directions in selvage. **Perforation:** Type B. **Paper:** Buff colored card. **Size:** 138 x 88 mm. (118 x 75 mm. for reply portion)



LC24



LC25

MEPSI	EPS		*	o
LC 23	27	2c red	5.-	6.-
LC 23S	27S	Same, overprinted MUESTRA	10.-	-
LC 23P	-	Same, perfin SPECIMEN BW Type I	100.-	-
LC 24	29	2c & 2c red	8.-	35.-
LC 24M	29M	2c red, 'M' only	2.-	8.-
LC 24R	29R	2c red, 'R' only	2.-	12.-
LC 24S	29S	2c & 2c red with MUESTRA overprint on M and R cards	12.-	-
LC 25	28	5c blue	2.-	6.-
LC 25v1	-	Same, without perforations	30.-	-
LC 25S	28S-	Same, overprinted MUESTRA	10.-	-
LC 25P	-	Same, perfin SPECIMEN BW Type I	100.-	-
LC 26	30	5c & 5c blue	6.-	40.-
LC 26M	30M	5c blue, 'M' only	2.-	8.-
LC 26R	30R	5c blue, 'R' only	2.-	12.-
LC 26S	30S	5c & 5c blue with MUESTRA overprint on M and R cards	12.-	-

1910 issue

**Indicium:** Circular design with embossed bust of Hidalgo. **Card Format:** Printing in color of indicium. With two or three lines of heading.



Directions in selvage. **Perforation:** Type B. **Paper:** Buff colored card. **Size:** 138-39 x 88 mm. (117 x 75 mm. for reply portion).

*The plate for printing the formular text was laid down with variations in text alignment. Each type noted below represents a different position on the plate.:*

*Format Type I: A of CARTA is below E of MEXICANA*

*Format Type II: A of CARTA is to the left of E of MEXICO*

*Subtype a: I of MEXICANA is over right leg A of CARTA*

*Subtype b: I of MEXICANA is over the left leg of A of CARTA*



MEPSI		EPS		*	°
<b>LC 31</b>	35	2c green <b>Format I</b>		3.-	6.-
LC 31Sa	-	Same, perfin SPECIMEN BW Type III		80.-	-
LC 31a	35a	2c green <b>Format II</b>		3.-	6.-
<b>LC 32</b>	37	2c + 2c green. <b>Format I</b>		8.-	25.-
LC 32M	37M	2c green, 'M' only		2.-	10.-
LC 32R	37R	2c green, 'R' only		2.-	14.-
LC 32Sa	-	Same, perfin SPECIMEN BW Type III		80.-	-
<b>LC 33</b>	36	5c orange, shades <b>Format I</b>		4.-	8.-
LC 33a	36a	5c orange, shades <b>Format II</b>		10.-	50.-
LC 33aS	-	Same, perfin SPECIMEN BW Type III		80.-	-
<b>LC 34</b>	38	5c + 5c orange, shades. <b>Format I</b>		10.-	30.-
LC 34M	38M	5c orange, 'M' only		2.-	15.-
LC 34R	38R	5c orange, 'R' only		2.-	20.-
LC 34S	-	Same, perfin SPECIMEN BW Type III		80.-	-

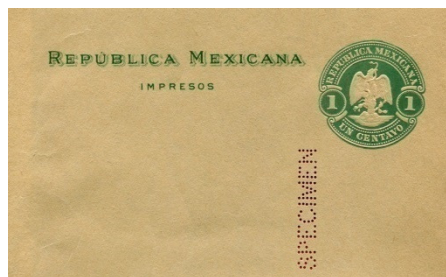
## WRAPPERS

### 1899

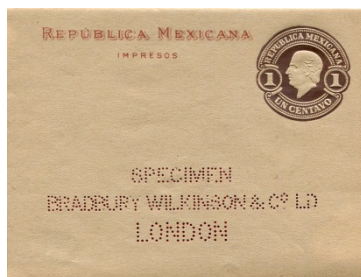
*Beginning with the 1899 issue until about 1930, Bradbury Wilkinson & Co Ltd. of London was the manufacturer of Mexican postal stationery. Items from its archive have five different types of perfins: Type I: SPECIMEN 34x5 mm. Type II: CANCELLED 40.5x5 mm. Type III: SPECIMEN / BRADBURY WILKINSON & C<sup>o</sup> LD / LONDON 92x26mm. in three lines. Type IV: Four diamond shaped perfins 10.5x6.5 mm. Type V: MUESTRA 73x9 mm.*

Known on wrappers are the following types

## Wrappers



BW Type I



BW Type III

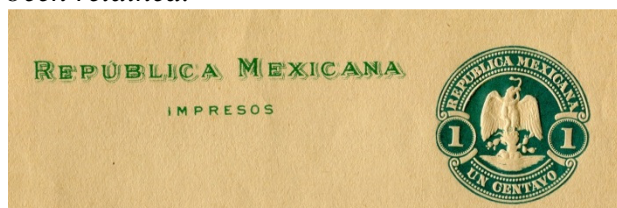


BW Type IV

1899 Nov. 1 issue

**Indicium:** Embossed indicium with Mexican Eagle coat-of-arms. **Wrapper Format:** Two lines in green. REPUBLICA MEXICANA and IMPRESOS. **Paper:** Cut vertically. Light to dark buff. **Size:** 123 x 300 mm. Gummed and clipped on top. The text of the format and indicium were printed separately resulting in a variation of the position of both in relation to each other.

*This is the first issue where different working dies can be distinguished. The wrappers probably were printed in sheets of eight or ten. The late Steven Whitcombe has described several dies of the eagle 1c and 2c wrappers. (Four for the 1c green, seven for the 2c red and six for the 1c violet). They differ in many details, such as the size of UN CENTAVO the spacing of U and N of UN its position between the two dotted circles etc. The small and large '1' varieties of the 1 Centavo lilac wrapper historically catalog are just two of these dies that are more distinctive. This work has not been completed and thus the EPS classification has been retained.*



WR37



WR38

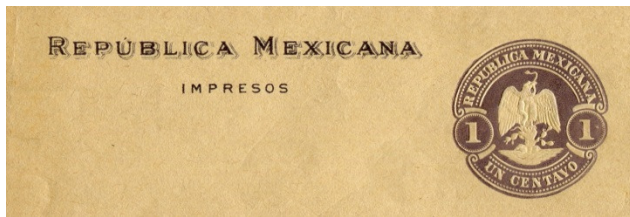
MEPSI	EPS		*	o
<b>WR 37</b>	36	1c green (green to blue green)	2.-	3.-
WR 37v1	-	Same, albino	150.-	-
WR 37S	36S	1c green MUESTRA overprint in small capitals	5.-	-
WR 37SBW	-	1c green SPECIMEN BW Type I Perfs. vertically ↑	150.-	-
<b>WR 38</b>	37	2c red	2.-	3.-
WR 38S	37S	2c red MUESTRA overprint	5.-	-
WR 38SBW	-	2c red SPECIMEN BW Type I Perfs. vertically ↑	150.-	-

1903-1904 issue

**Indicium:** Embossed indicium with Mexican Eagle coat-of-arms. Foot of '1' in die I is 2½ mm. wide, in die II 3¾ mm. **Wrapper Format:** Two lines in color of indicium. REPUBLICA MEXICANA and IMPRESOS. Printing in brown lilac shade. **Paper:** Cut vertical. Light to dark buff. **Size:** 123 x 300 mm. Gummed and clipped on top.



## Wrappers



WR39



WR40 dark green



WR39 die I  
small '1'



WR39a die II  
large '1'

MEPSI	EPS		*	o
WR 39	38/39	1c lilac, shades (see note) Die I small '1'	2.-	3.-
WR 39S	38S	1c lilac MUESTRA overprint in small capitals	5.-	
WR 39Sa	-	1c lilac SPECIMEN BW Type I Perfs. vertically ↑	150.-	
WR 39a	40	1c lilac Die II large '1'	2.-	3.-

**Note:** The color of the indicium of both die types varies from light lilac to lilac. The color of the formular text varies from dark brown lilac to brown lilac to lilac.

MEPSI	EPS		*	o
WR 40	41	2c green	2.-	3.-
WR 40S	-	2c green MUESTRA in small <b>violet</b> capitals overprint	6.-	-
WR 40Sa	-	2c green SPECIMEN BW Type I Perfs. vertically ↑	150.-	-

**Note:** The color of the indicium varies from green to dark green

1905 issue

**Indicium:** Embossed indicium with head of Hidalgo facing left. **Wrapper Format:** Two lines: REPUBLICA MEXICANA and IMPRESOS. **Paper:** Cut vertical. Earlier printings on dark buff paper. Later ones on light buff paper. **Size:** 123 x 300 mm. Gummed and clipped on top.



WR41



WR42

MEPSI	EPS		*	o
WR 41	42	1c lilac, printing light lilac to lilac	2.-	2.-
WR 41Sa		1c lilac, SPECIMEN BW Type III	75.-	-
WR 42	43	2c green, printing in color of indicium	2.-	2.-
WR 42Sa		2c green, SPECIMEN BW Type IV	75.-	-

**Note:** The format of the 1c wrapper is printed in a brownish-red lilac.



## Special Delivery Envelopes Entrega Inmediata (SD)

Only two Special Delivery envelopes were issued in 1929 and 1930 respectively. Commercially used envelopes are very scarce. From the manuscript date on Nr.2a it seems likely that SD2 was printed in January or February 1930.

### 1929 issue

**Indicium:** Special delivery Motorcycle Mailman engraved indicium. **Format:** ENTREGA INMEDIATA 55 x 3 mm. in block letters on upper front and 104 x 5 mm on flap. **Paper:** Ivory. **Lining:** Nr.3. **Size:** 165 x 93 mm. **Knife:** 25.



MEPSI	EP		*	°
<b>SD 1</b>	<b>1</b>	30c grayish black	5.-	250.-

**Note:** On SD1 the EN of ENTREGA on the flap usually is somewhat blurred. (This is the part of the word overlaying the indicium). Sometimes a faint double impression of EN appears. Value: 3 x normal.



### 1930 issue

**Stamp:** Special delivery Motorcycle Mailman stamp engraved. **Format:** ENTREGA INMEDIATA 42 x 3 mm. in serified outlined letters on upper front and 58 x 3.5 mm on flap. **Paper:** Ivory. **Lining:** 3. **Size:** 164 x 93 mm. **Knife:** 25.

MEPSI	EPS		*	°
<b>SD 2</b>	<b>2</b>	30c black	8.-	400.-
<b>SD 2a</b>	-	Same, with Type 4 Bradbury MUESTRA perfin (1930)	80.-	-